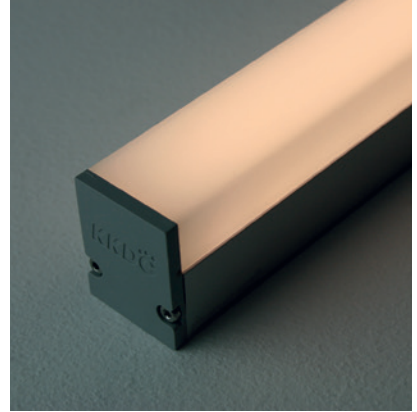


Linear

# LINI Glow XL R207 Fixture Guide

# KKDÖ

Indoor | Surface | Dynamic output up to 899lm/m (274lm/ft)

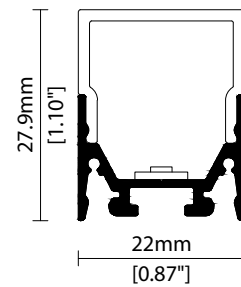


## Key applications

- ✓ Architectural detail
- ✓ Cabinet & furniture
- ✓ Direct lighting
- ✓ Interior
- ✓ Mirror back lighting
- ✓ Special effect

## Key features

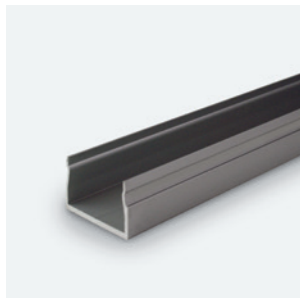
- ✓ Custom lengths
- ✓ Constant Voltage (CV)
- ✓ Continuous light runs
- ✓ Diffusion: homogenous
- ✓ Direct view
- ✓ Extensive CCT range
- ✓ IP40 dry area
- ✓ LEDmix dynamic white



## MOUNTING METHODS



KKCP-11 Concealed clip



KKCR-01-1000 Cable raceway (1000mm)  
KKCR-01-2000 Cable raceway (2000mm)  
KKCR-01-3000 Cable raceway (3000mm)



KKJT-02 Joining bar

## Warm dim (Dynamic white)

Output Luminance %

min DIM1 Input Level max

— CH1 (Warmer)  
— CH2 (Cooler)

**LEDmix R207**

CCT Selection 1      CCT Selection 2

**LEDmix R209**

CCT Selection 1      CCT Selection 2

LEDmix **warm dim** (Dynamic white) is a pre-programmed dimming curve setting enabling two different colour temperatures (CCTs) to blend harmoniously to achieve a warming lighting effect when dimmed.

KKDC LEDmix strips allow two separate CCT selections to be specified within the same PCB strip.

Use the table opposite to help determine which 2 CCT selections you require according to your preferred cool to warm dimming range.

*\*Note: The blended CCT is approx. 'cool-end' result at 100% brightness based on using the KKDC LED CCT specification.*

CCT Selection 1	CCT Selection 2	
	Blended CCT*	PCB CCT
1900K~	2000K 2100K 2200K 2300K 2500K 2600K 2700K 3000K 3500K	2100K PCB 2300K PCB 2500K PCB 2700K PCB 3000K PCB 3200K PCB 3500K PCB 4000K PCB 5000K PCB
2100K~	2200K 2300K 2400K 2600K 2700K 2800K 3000K 3600K	2300K PCB 2500K PCB 2700K PCB 3000K PCB 3200K PCB 3500K PCB 4000K PCB 5000K PCB
2300K~	2400K 2500K 2700K 2800K 2900K 3100K 3700K	2500K PCB 2700K PCB 3000K PCB 3200K PCB 3500K PCB 4000K PCB 5000K PCB
2500K~	2600K 2800K 2800K 3000K 3200K 3800K	2700K PCB 3000K PCB 3200K PCB 3500K PCB 4000K PCB 5000K PCB
2700K~	2900K 3000K 3100K 3400K 3900K	3000K PCB 3200K PCB 3500K PCB 4000K PCB 5000K PCB
3000K~	3100K 3300K 3500K 4000K	3200K PCB 3500K PCB 4000K PCB 5000K PCB
3200K~	3300K 3600K 4100K	3500K PCB 4000K PCB 5000K PCB
3500K~	3700K 4300K	4000K PCB 5000K PCB
4000K~	5100K	5000K PCB

## Tuneable white

Channel Mix Ratio %

min DIM1 Input Level max

— CH1 (Warmer)  
— CH2 (Cooler)

**LEDmix R207**

CCT Selection 1 CCT Selection 2

**LEDmix R209**

CCT Selection 1 CCT Selection 2

LEDmix **tunable white** enables two different LED colour temperatures (CCTs) to be specified within the same LEDmix strip.

Each CCT selection can then be independently controlled (via your dimming control system) to adjust the warm & cool light output (CCT selections) and thus tailor a blended light colour of your choosing.

CCT Selection 1	CCT Selection 2
1900K~	2100K 2300K 2500K 2700K 3000K 3200K 3500K 4000K 5000K
2100K~	2300K 2500K 2700K 3000K 3200K 3500K 4000K 5000K
2300K~	2500K 2700K 3000K 3200K 3500K 4000K 5000K
2500K~	2700K 3000K 3200K 3500K 4000K 5000K
2700K~	3000K 3200K 3500K 4000K 5000K
3000K~	3200K 3500K 4000K 5000K
3200K~	3500K 4000K 5000K
3500K~	4000K 5000K
4000K~	5000K

Linear

# LINE Glow XL R207

## Specification sheet



<b>Dimensions</b>	H28/W22/L94-2011mm (H1.1/W0.87/L3.70-79.17in)
<b>PCB Cut-point</b>	83.3mm increment/2000mm max (3.28in increment/78.74in max)
<b>LED Pitch</b>	13.9mm-144LED/m (0.55in - 44LED/ft)
<b>Chip</b>	<b>s-line</b> <b>k-line</b>
<b>Cover/Optics</b>	Diffused (156°)
<b>CCT</b>	<b>s-line:</b> 1900K/2100K/2300K/2500K/2700K/3000K/3500K/4000K/5000K <b>k-line:</b> 1900K/2100K/2300K/2500K/2700K/3000K/3500K/4000K/5000K
<b>LED binning</b>	<b>s-line:</b> 2-step MacAdam ellipse <b>k-line:</b> 3-step MacAdam ellipse
<b>CRI</b>	≥ 95
<b>Lifetime</b>	50,000 hours @ 25°C (50,000 hours @ 77°F)
<b>Operating temp</b>	T <sub>a</sub> = -25 to 50°C (T <sub>c</sub> max = 67°C) T <sub>a</sub> = -13 to 122°F (T <sub>c</sub> max = 152°F)
<b>IP Rating</b>	IP40
<b>Finish</b>	Silver anodised
<b>Mounting</b>	Surface mounting via concealed clips or cable raceway
<b>Power feed</b>	Hardwire tails or male/female connectors
<b>Control</b>	0-10V/1-10V/DMX/DALI



### LED Grading Key

#### Exclusive Grade

<b>s</b> <b>s-line*</b>	*KKDC tuned CCT range
2-step CCT range	

#### Base Grade

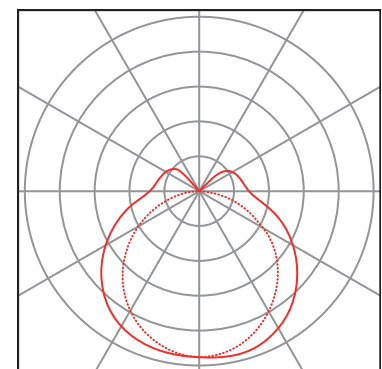
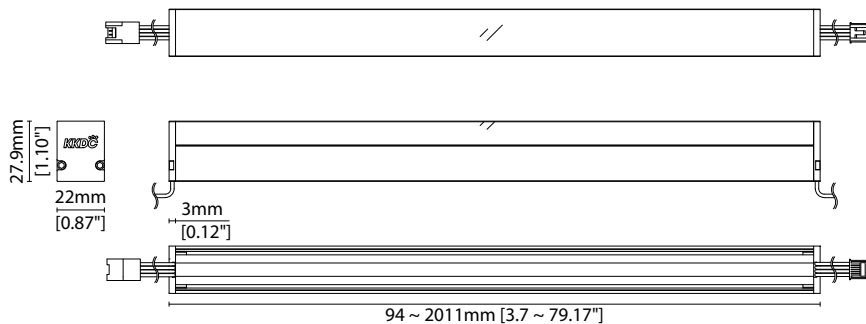
<b>k</b> <b>k-line</b>	3-step commercial range Energy Star CCTs
------------------------	---

<b>Power consumption</b>	<b>Supply voltage</b>	<b>Supply current</b>
16W/m (4.88W/ft)	24V DC	0.67A/m (0.20A/ft)

### Performance Data (2100K+5000K)

	R1	R2	R3	R4	R5	R6	R7	R8	R9	R10	R11	R12	R13	R14
<b>k-line</b>	96	95	97	98	96	92	94	95	93	93	96	78	95	99

Diffused Cover		CRI	R9	Rf	Rg
<b>s-line</b>	899lm/m (274lm/ft) 56.2lm/W	96	93	-	-
<b>k-line</b>	848lm/m (258lm/ft) 53lm/W	95	92	-	-



— C0 / C180      cd / 1000 lm      ..... C90 / C270

Data derived from independent UKAS/IESNA LM-79-08 accredited testing of production samples.

# LINI Glow XL R207

## Code Table



### FIXTURE

Model	Finish	Cover	Grade <sup>1</sup>	LED	Colour (CCT)	Length Availability <sup>2</sup>	IP	Cable Length	Power Feed <sup>3</sup>	Input												
LINI Glow XL	GX	Silver Anodised	SA	Diffused U cover	0	s <sup>4</sup> s	R207	R207	1900K	19	m	94.3-2011mm 83.3mm increments	IP40	40	300mm/ 11.81"	0300	Single no sheath tail	S00X	DC 24V	g		
									2100K	21												
									2300K	23												
									2500K	25	i	3.71-79.17in 3.28in increments			1000mm/ 39.37"	1000	Double no sheath tail	D00X				
									2700K	27					(Specify length code OR total run length)	Single no sheath IP20 connector	S20X					
									3000K	30						Double no sheath IP20 connector	D20X					
									3500K	35												
									4000K	40												
									5000K	50												

<sup>1</sup> Refer to **LED Grading Key** on **Specification sheet** page

<sup>2</sup> Refer to **Length Availability List** or enter total run length instead of length code

<sup>3</sup> Refer to **Power Feed Options** on **Options** pages

<sup>4</sup> LEDmix requires two colour temperature choices

### Code Example:

GX	-	SA	-	0	-	s	-	R207	-	2150	-	m	511	-	40	-	0300	-	D20X	-	g
LINI Glow XL		Silver Anodised		Diffused U cover				R207		2100K+5000K		511mm		IP40		300mm/11.81"		Double no sheath tail		DC 24V	

### Accessories

#### Mounting Accessories

KKCP-11	Concealed Clip
KKCR-01-1000	1000mm/39.37" Cable Raceway
KKCR-01-2000	2000mm/78.74" Cable Raceway
KKCR-01-3000	3000mm/118.11" Cable Raceway
KKJT-02	Joining Bar (allow one per join)

\* Refer to **Mounting accessories** on **Accessories** pages

#### Connection Accessories

KKCN-18	4 PIN LEDmix male & female 50mm/1.97" pair
KKCN-19	4 PIN LEDmix male & female 300mm/11.81" pair
KKCN-24	4 PIN LEDmix 300mm/11.81" extension lead

\* Refer to **Power feed** on **Accessories** pages

#### PSU/Driver

0-10V/1-10V/DALI/DMX

\* Refer to **Driver/PSU Options** page for details or provide requirement and KKDC to offer the suitable option

### LED Engine Variants (LED Strip Type)

Colour	LED	Lumen/m	Lumen/ft	W/m	W/ft	Spec Doc	Length	Increment
Single CCT	R007	386	118	7	2.13	LINI Glow XL R007	94-2011mm (3.71-79.17in)	41.7mm (1.64in)
	R014	801	244	14	4.27	LINI Glow XL R014	94-2011mm (3.71-79.17in)	41.7mm (1.64in)
	R020	1145	349	20	6.1	LINI Glow XL R020	94-2011mm (3.71-79.17in)	41.7mm (1.64in)
	A040	2680	817	40	12.19	LINI Glow XL A040	88-1511mm (3.46-59.49in)	38.46mm (1.51in)
Warm Dim/Dynamic White	R207	899	274	16	4.88	LINI Glow XL R207	94-2011mm (3.71-79.17in)	83.3mm (3.28in)
RGB	501	Red 90 Green 193 Blue 32 RGB 280	Red 27 Green 59 Blue 10 RGB 85	15.6	4.75	LINI Glow XL RGB	94-2011mm (3.71-79.17in)	83.3mm (3.28in)
RGBW	R201	689	210	20	6.1	LINI Glow XL RGBW	136-2011mm (5.35-79.17in)	62.5mm (2.46in)

\* Performance data: s-line, diffused cover, 2100K + 5000K

# LINE Glow XL R207

## Length Availability List

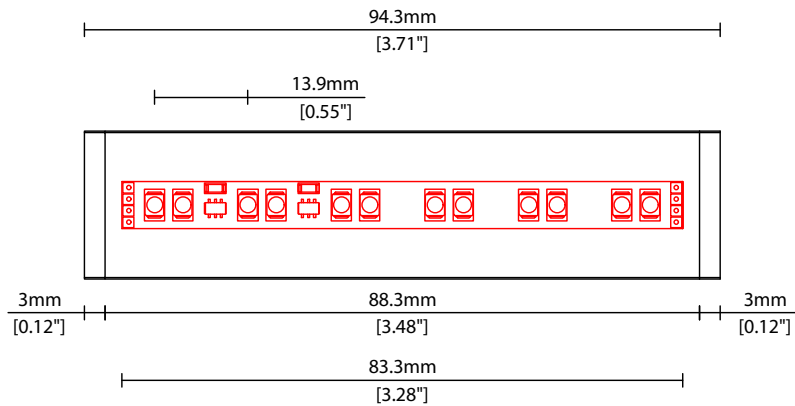


Length Code		Fixture Length <sup>1</sup>		LED Strip <sup>2</sup>		End Cap Dimension <sup>3</sup>		Wattage (W)	Output (lm)
Metric	Imperial(US)	Metric	Imperial(US)	Metric	Imperial(US)	Metric	Imperial(US)		3000K (Test Data)
m0094	i0004	94mm	3.71in	83mm	3.28in	6mm	0.24in	1.67	90
m0178	i0007	178mm	6.99in	167mm	6.56in	6mm	0.24in	3.33	180
m0261	i0010	261mm	10.28in	250mm	9.84in	6mm	0.24in	5.00	270
m0344	i0014	344mm	13.56in	333mm	13.12in	6mm	0.24in	6.67	360
m0428	i0017	428mm	16.84in	417mm	16.40in	6mm	0.24in	8.33	450
m0511	i0020	511mm	20.12in	500mm	19.69in	6mm	0.24in	10.00	540
m0594	i0023	594mm	23.40in	583mm	22.97in	6mm	0.24in	11.67	630
m0678	i0027	678mm	26.68in	667mm	26.25in	6mm	0.24in	13.33	720
m0761	i0030	761mm	29.96in	750mm	29.53in	6mm	0.24in	15.00	810
m0844	i0033	844mm	33.24in	833mm	32.81in	6mm	0.24in	16.67	900
m0928	i0037	928mm	36.52in	917mm	36.09in	6mm	0.24in	18.33	990
m1011	i0040	1011mm	39.80in	1000mm	39.37in	6mm	0.24in	20.00	1080
m1094	i0043	1094mm	43.08in	1083mm	42.65in	6mm	0.24in	21.67	1170
m1178	i0046	1178mm	46.36in	1167mm	45.93in	6mm	0.24in	23.33	1260
m1261	i0050	1261mm	49.65in	1250mm	49.21in	6mm	0.24in	25.00	1350
m1344	i0053	1344mm	52.93in	1333mm	52.49in	6mm	0.24in	26.67	1440
m1428	i0056	1428mm	56.21in	1417mm	55.77in	6mm	0.24in	28.33	1530
m1511	i0059	1511mm	59.49in	1500mm	59.06in	6mm	0.24in	30.00	1620
m1594	i0063	1594mm	62.77in	1583mm	62.34in	6mm	0.24in	31.67	1710
m1678	i0066	1678mm	66.05in	1667mm	65.62in	6mm	0.24in	33.33	1800
m1761	i0069	1761mm	69.33in	1750mm	68.90in	6mm	0.24in	35.00	1890
m1844	i0073	1844mm	72.61in	1833mm	72.18in	6mm	0.24in	36.67	1980
m1928	i0076	1928mm	75.89in	1917mm	75.46in	6mm	0.24in	20.00	1080
m2011	i0079	2011mm	79.17in	2000mm	78.74in	6mm	0.24in	40.00	2160

<sup>1</sup> Actual total overall length of light fixture (LED strip + end caps + void/wire hole)

<sup>2</sup> Actual length of PCB strip

<sup>3</sup> Actual length of 2x end caps



Linear

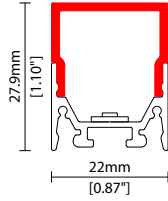
# LINI Glow XL R207

## Options

# KKDC

### COVER/LENS OPTIONS

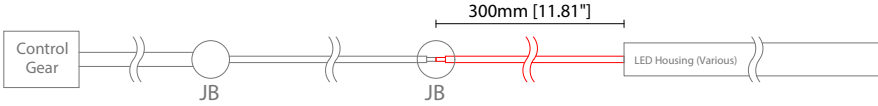
\* Options are an integral part of the fixture ordering codes. Please refer to **Code Table** pages.



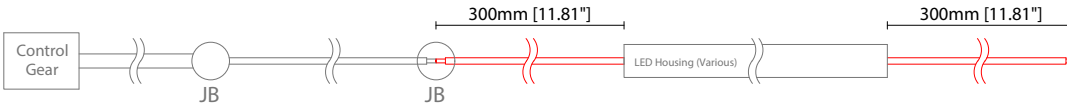
**0** Diffused U cover  
W22/H27.9mm (W0.87/H1.10")

### POWER FEED OPTIONS

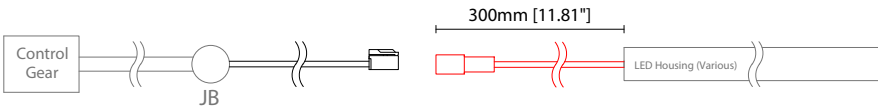
0300 S00X 300mm (11.81") Single no sheath tail



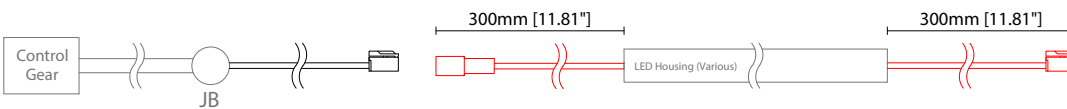
0300 D00X 300mm (11.81") Double no sheath tail



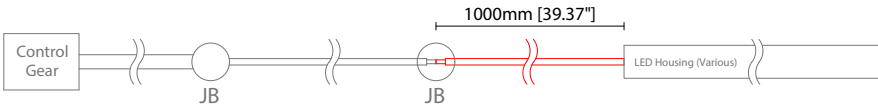
0300 S20X 300mm (11.81") Single no sheath IP20 connector



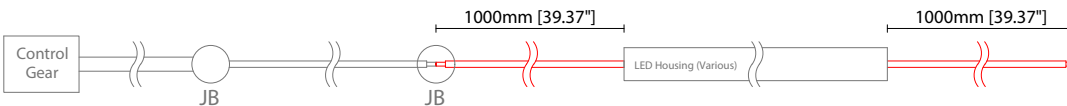
0300 D20X 300mm (11.81") Double no sheath IP20 connector



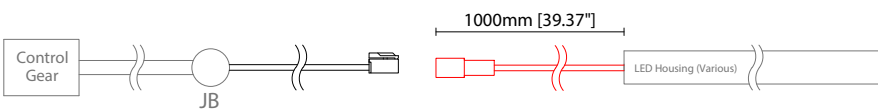
1000 S00X 1000mm (39.37") Single no sheath tail



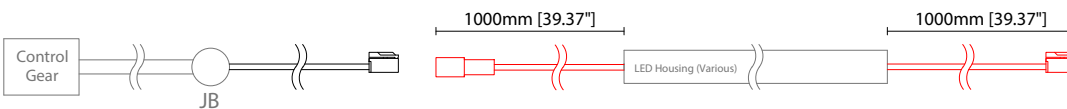
1000 D00X 1000mm (39.37") Double no sheath tail



1000 S20X 1000mm (39.37") Single no sheath IP20 connector



1000 D20X 1000mm (39.37") Double no sheath IP20 connector



#### Key

Control Gear Power supply, sub-controllers & control systems

JB Junction box / cable connection



Linear

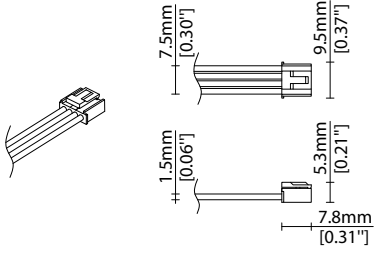
# LINI Glow XL R207

## Options

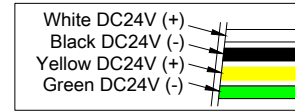
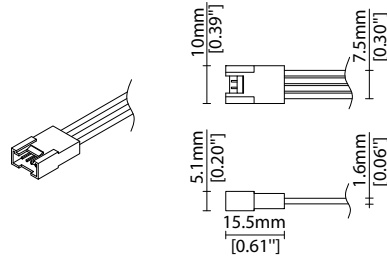


### POWER FEED OPTIONS (CONTINUED)

#### 4 Pin LEDmix Female Connector



#### 4 Pin LEDmix Male Connector

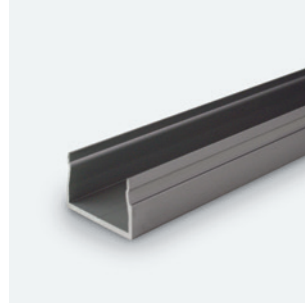
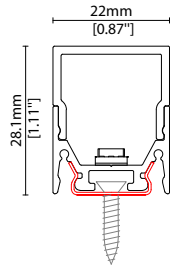


### MOUNTING ACCESSORIES

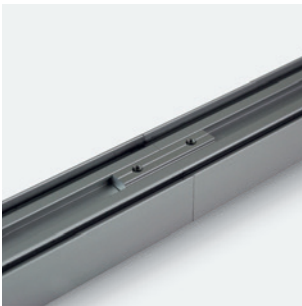
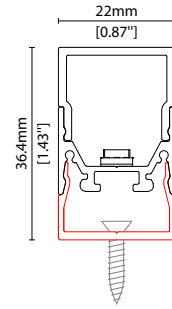
Note: Accessories are to be ordered separately with corresponding code shown below.



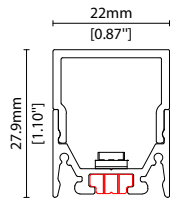
**KKCP-11**  
 Concealed clip  
 (allow 3 per metre/40in)  
 S/Steel finish  
 L20/W22/H28.1mm  
 (L0.79/W0.87/H1.11")



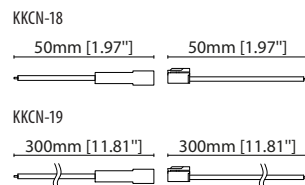
**KKCR-01-1000** 1000mm (39.37in)  
**KKCR-01-2000** 2000mm (78.74in)  
**KKCR-01-3000** 3000mm (118.11in)  
 Cable raceway\*  
 Anodised aluminium finish  
 W22/H36.4mm (W0.87/H1.43")  
 \* Cut & drilled to fit on site



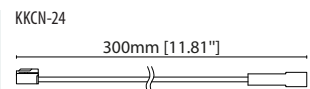
**KKJT-02**  
 Joining bar\* (allow 1 per join)  
 Anodised aluminium finish  
 L25mm (L0.98")  
 \* Mounting option required with  
 Joining bar



### POWER FEED



**KKCN-18** 50mm (1.97in) pair  
**KKCN-19** 300mm (11.81in) pair  
 4 PIN LEDmix male + female  
 connector set



**KKCN-24**  
 4 PIN LEDmix 300mm (11.81in)  
 extension lead

Linear

# LINI Glow XL R207 Accessories

# KKDC

## KKDC CONTROL



IP20  
Plastic housing  
L170/W59/H29mm  
(L6.69/W2.32/H1.14in)

### KKDM-06 1-10V

visDIM dimmable sub-controller  
(4 x 8A max @ 12-36V)



IP20  
Plastic housing  
L170/W53.4/H28mm  
(L6.69/W2.10/H1.10in)

### KKSC-05 DMX

visDIM dimmable sub-controller  
(4 x 5A max @ 12-36V)



IP20  
Plastic housing  
L170/W59/H29mm  
(L6.69/W2.32/H1.14in)

### KKDL-02 DALI

visDIM dimmable sub-controller  
(4 x 8A max @ 12-36V)



IP20  
Plastic housing  
L166/W53.4/H23mm  
(L6.54/W2.10/H0.91in)

### KKDL-03 DALI

visDIM dimmable sub-controller  
(4 x 5A max @ 12-36V)

### AVAILABLE PSU OPTIONS

Control Mode	PSU (Order Code)	Input Voltage AC	Output Voltage DC	Rated Output Current	Rated Power	Dim %	IP Rating
Switched	CEN-60-24	90-295V	24V	2.5A	60W	-	IP67
	HLG-60H-24	90-305V	24V	2.5A	60W	-	IP67
	HLG-100H-24	90-305V	24V	4.0A	100W	-	IP67
	HLG-150H-24	90-305V	24V	6.3A	150W	-	IP67
	HLG-240H-24	90-305V	24V	10A	240W	-	IP67
0-10V (1-10V)	PWM-40-24	90-305V	24V	1.67A	40W	100-0.15 (100-10)	IP67
	PWM-60-24	90-305V	24V	2.5A	60W	100-0.15 (100-10)	IP67
	PWM-90-24	90-305V	24V	3.67A	90W	100-0.15 (100-10)	IP67
	PWM-120-24	90-305V	24V	5.0A	120W	100-0.15 (100-10)	IP67
DALI	LIN100A1	120-277V	24V	1A per channel	100W	100-0.1	IP66/IP40
DMX RGB	LIN100A1	120-277V	24V	1.33A per channel	100W	100-0.1	IP66/IP40
DMX RGBW	LIN100A1	120-277A	24V	1A per channel	100W	100-0.1	IP66/IP40

### Flicker Free Options - Combination of PSU+ sub-controller

Control Mode	PSU (Order Code)	Sub-controller (Order Code)	Input Voltage AC	Output Voltage DC	Rated Output Current	Rated Power	Dim %	IP Rating PSU/ Sub-controller
0-10V or 1-10V	CEN-60-24	KKDM-06	90-295V	24V	2.5A	60W	100-0.9	IP67/IP20
	HLG-60H-24	KKDM-06	90-295V	24V	2.5A	60W	100-0.9	IP67/IP20
	HLG-100H-24	KKDM-06	90-295V	24V	4.0A	100W	100-0.9	IP67/IP20
	HLG-150H-24	KKDM-06	90-295V	24V	6.3A	150W	100-0.9	IP67/IP20
	HLG-240H-24	KKDM-06	90-295V	24V	10.0A	240W	100-0.9	IP67/IP20
DALI	CEN-60-24	KKDL-02/03	90-295V	24V	2.5A	60W	100-0.1	IP67/IP20
	HLG-60H-24	KKDL-02/03	90-305V	24V	2.5A	60W	100-0.1	IP67/IP20
	HLG-100H-24	KKDL-02/03	90-305V	24V	4.0A	100W	100-0.1	IP67/IP20
	HLG-150H-24	KKDL-02/03	90-305V	24V	6.3A	150W	100-0.1	IP67/IP20
	HLG-240H-24	KKDL-02/03	90-305V	24V	10.0A	240W	100-0.1	IP67/IP20
DMX RGB	CEN-60-24	KKSC-05	90-295V	24V	2.5A	60W	100-0.9	IP67/IP20
	HLG-60H-24	KKSC-05	90-305V	24V	2.5A	60W	100-0.9	IP67/IP20
	HLG-100H-24	KKSC-05	90-305V	24V	4A	100W	100-0.9	IP67/IP20
	HLG-150H-24	KKSC-05	90-305V	24V	6.3A	150W	100-0.9	IP67/IP20
	HLG-240H-24	KKSC-05	90-305V	24V	10.0A	240W	100-0.9	IP67/IP20

<sup>1</sup> The items shown above cover the most frequently used specification but does not exhaust the possible options

<sup>2</sup> PSU and/or driver can be chosen from the table, or KKDC may recommend the best option upon receipt of the controls requirement and installation environment

<sup>3</sup> Electrical shop drawing will include detailed information of PSU and relevant control drivers

<sup>4</sup> Cut sheets are available on the controls section of [www.kkdc.lighting](http://www.kkdc.lighting) or upon request